

Cat. Number	Group		Artifact Class	Artifact Type	Form	Function	Condition	Date Range	Notes
	Assignment								
03GA1-1	D		Glass	bottle					
03GA1-2	A		Glass	flat					
03GA1-3	D		Glass	other					very thin
03GA1-4	D		Ceramic	domestic					no cross mend
03GA1-5	A		Metal	construction					
03GA1-6	D		Metal	domestic	bottle cap	bottle closure	rusted	post-1892	
03GA1-7	D		Bone	faunal remains					
03GA2-1	D		Glass	bottle					
03GA2-2	A		Glass	flat					
03GA2-3	D		Glass	other					
03GA2-4	D		Ceramic	ironstone					
03GA2-5	A		Metal	construction					nail fragments
03GA2-6	D		Bone	faunal remains					
03GA2-7	A		Metal	construction					
03GA2-8	A		Constr. Mat.	UID					
03GA3-1	D		Glass	bottle					
03GA3-2	A		Metal	construction					1 nail frag. "U" shaped
03GA3-3	D		Glass	other					
03GA3-4	A		Metal	other					
03GA4-1	D		Metal	other					
03GA4-2	A		Metal	construction			rusted/whole		
03GA4-3	P		Metal	shell casing			base scored		rim fire/spent
03GA4-4	D		Glass	bottle					
03GA4-5	P		Plastic	UID					
03GA5-1	D		Glass	bottle					
03GA5-2	A		Metal	construction					
03GA5-3	A		Glass	flat					
03GA5-4	D		Ceramic	ironstone					

Group									
Cat. Number	Assignment	Artifact Class	Artifact Type	Form	Function	Condition	Date Range	Notes	
03GA5-5	D	Bone	faunal remains						
03GA5-6	A	Constr. Mat.	UID						
03GA5-7	D	Ceramic	Porcelain					partial maker's mark	
03GA6-1	D	Glass	bottle					embossing	
03GA6-2	D	Glass	bottle						
03GA6-3	A	Glass	flat						
03GA6-4	D	Glass	other						
03GA6-5	P	Plastic	UID						
03GA6-6	A	Constr. Mat.	brick					writing--partial	
03GA6-7	A	Constr. Mat.	cement						
03GA6-8	A	Constr. Mat.	asbestos						
03GA6-9	A	Constr. Mat.	other						
03GA6-10	A	Metal	other						
03GA6-11	A	Constr. Mat.	cement					w/ wrinkled enamel paint	
03GA7-1	A	Glass	flat						
03GA7-2	D	Glass	bottle						
03GA7-3	D	Glass	other						
03GA7-4	D	Bone	faunal remains						
03GA7-5	D	Ceramic	ironstone						
03GA7-6	A	Metal	construction						
03GA7-7	A	Metal	other						
03GA7-8	-	Stone	-					1 polished & pitted side	
03GA7-9	A	Ceramic	construction	drain pipe		fragment, large			
03GA7-10	P	Ceramic	button		clothing fastener				
03GA7-11	D	Glass	bottle	finish				possible patent medicine	
03GA8-1	A	Glass	flat						

Cat. Number	Group		Artifact Class	Artifact Type	Form	Function	Condition	Date Range	Notes
	Assignment								
03GA8-2	D		Glass	bottle					
03GA8-3	D		Glass	other					
03GA8-4	D		Ceramic	ironstone					
03GA8-5	A		Metal	construction					
03GA8-6	D		Metal	other					
03GA8-7	D		Metal	domestic					
03GA8-8	-		Bone	faunal remains					
03GA8-9	-		Plastic	UID					
03GA8-10	P		Button	button, shell		clothing fastener			Mother-of-pearl
03GA8-11	-		Stone	-					
03GA8-12	P		Plastic	Personal	hair comb		broken		
03GA8-18	-		Carbon	Carbon Rod			broken		
03GA9-1	D		Glass	bottle					
03GA9-2	A		Glass	flat					
03GA9-3	D		Glass	other					
03GA9-4	D		Bone	faunal remains					
03GA9-5	A		Metal	construction					
03GA9-6	A		Metal	other					
03GA9-7	P		Plastic	UID					
03GA10-1	A		Metal	construction					
03GA10-2	A		Metal	hardware					
03GA10-3	A		Metal	other					
03GA10-4	D		Bone	faunal remains					
03GA10-5	A		Constr. Mat.	asbestos					
03GA10-6	D		Ceramic	ironstone					
03GA10-7	A		Glass	flat					

Cat. Number	Group		Artifact Class	Artifact Type	Form	Function	Condition	Date Range	Notes
	Assignment								
03GA10-8	P		Plastic	UID					
03GA10-9	D		Glass	bottle					
03GA10-10	P		Metal	Personal	brass cufflink	clothing fastener			
03GA11-1	D		Bone	faunal remains					
03GA11-1	A		Constr. Mat.	roofing shingle					
03GA11-1	A		Metal	hardware					
03GA11-2	A		Metal	construction					
03GA11-3	A		Metal	other					
03GA11-4	D		Ceramic	ironstone					
03GA11-5	P		Plastic	UID					
03GA11-6	D		Glass	bottle					
03GA11-7	D		Glass	bottle	finish		partial		
03GA11-8	A		Metal	construction					
03GA11-9	A		Metal	hardware					
03GA12-1	A		Metal	construction					
03GA12-2	D		Glass	bottle					
03GA12-3	P		Plastic	strapping tape					
03GA12-4	D		Ceramic	ironstone					
03GA12-5	D		Bone	faunal remains					
03GA12-6	A		Constr. Mat.	roofing shingle					
03GA12-7	D		Glass	other					
03GA12-8	A		Metal	other					
03GA12-9	A		Metal	hardware					
03GA12-10	P		Plastic	Personal	LP record		fragment		
03GA13-1	A		Metal	construction					

Cat. Number	Group		Artifact Class	Artifact Type	Form	Function	Condition	Date Range	Notes
	Assignment								
03GA13-2	D		Glass	bottle					
03GA13-3	D		Ceramic	ironstone					
03GA13-4	D		Bone	faunal remains					fish vertebrae
03GA13-5	P		Plastic	UID					
03GA13-6	P		Metal	Personal					costume jewelry
03GA14-1	D		Glass	bottle					
03GA14-2	A		Glass	flat					
03GA14-3	D		Ceramic	ironstone					
03GA14-4	A		Constr. Mat.	cement					
03GA14-5	A		Metal	construction					
03GA14-6	A		Metal	other					
03GA16-1	D		Glass	bottle					
03GA16-2	D		Glass	other					
03GA16-3	D		Ceramic	ironstone					
03GA16-4	A		Metal	other					
03GA16-5	D		Bone	faunal remains					
03GA16-6	A		Metal	construction					
03GA16-7	D		Ceramic	other					blue on white
03GA17-1	D		Glass	bottle					
03GA17-2	A		Glass	flat					
03GA17-3	D		Glass	other					
03GA17-4	D		Ceramic	ironstone					
03GA17-5	D		Glass	other					
03GA17-6	A		Metal	other					
03GA17-7	A		Metal	construction					
03GA17-8	D		Bone	faunal remains					

Cat. Number	Group		Artifact Class	Artifact Type	Form	Function	Condition	Date Range	Notes
	Assignment								
03GA19-1	D		Bone	faunal remains					
03GA19-2	D		Glass	other					
03GA19-3	D		Glass	bottle					
03GA19-4	A		Glass	flat					
03GA19-5	P		Plastic	Personal	LP record		fragment		
03GA19-6	A		Constr. Mat.	cement					
03GA19-7	A		Metal	other					
03GA19-8	A		Metal	construction					
03GA19-9	P		Glass	Personal	marble				color is clear w/scratches
03GA19-10	D		Glass	domestic	bottle stopper				club sauce style
03GA19-11	D		Glass	bottle	finish		partial		water bottle, large
03GA20-1	D		Glass	bottle					
03GA20-2	A		Glass	flat					
03GA20-3	D		Glass	other					
03GA20-4	D		Ceramic	ironstone					
03GA20-5	P		Plastic	Personal	hair comb		I "tooth"		
03GA20-6	A		Constr. Mat.	asbestos					
03GA20-7	D		Metal	domestic	bottle cap		rusted		
03GA20-8	A		Metal	construction					nail fragments
03GA20-9	A		Metal	other					
03GA21-1	D		Bone	faunal remains					
03GA21-2	D		Glass	bottle					
03GA21-3	D		Glass	other					
03GA21-4	A		Glass	flat					
03GA21-5	D		Ceramic	Porcelain					
03GA21-6	A		Metal	other					
03GA21-7	A		Metal	construction					

Cat. Number	Group		Artifact Class	Artifact Type	Form	Function	Condition	Date Range	Notes
	Assignment								
03GA21-8	A		Constr. Mat.	brick					
03GA21-9	M		Ceramic	ironstone					
03GA21-10	D		Metal	Personal					.22 shell casing, safety pin, fastener
03GA21-11	D		Glass	bottle					"Borden's its got to be good"
03GA21-12	D		Glass	bottle	bottle stopper				club sauce style
03GA21-13	D		Glass	bottle					cross mend with above
03GA21-14	D		Glass	bottle					cross mend with above
03GA22-1	A		Metal	other					
03GA22-2	D		Bone	faunal remains					
03GA22-3	A		Constr. Mat.	slate					
03GA22-4	D		Glass	other					white glass
03GA22-5	D		Glass	bottle					
03GA22-6	D		Glass	bottle					embossing
03GA22-7	D		Ceramic	Porcelain					red paint, abstract design
03GA22-8	A		Metal	construction					
03GA23-1	A		Metal	other					
03GA23-2	A		Metal	construction					
03GA23-3	D		Bone	faunal remains					
03GA23-4	A		Constr. Mat.	concrete					
03GA23-5	D		Ceramic	Porcelain					
03GA23-6	D		Ceramic	ironstone					
03GA23-7	D		Glass	bottle					
03GA23-8	D		Glass	flat					
03GA23-9	D		Glass	other					decorative edge--slight amethyst
03GA23-10	D		Glass	bottle					

Cat. Number	Group		Artifact Class	Artifact Type	Form	Function	Condition	Date Range	Notes
	Assignment								
03GA24-1	A		Metal	construction					
03GA24-2	A		Constr. Mat.	concrete					
03GA24-3	D		Ceramic	Porcelain					
03GA24-4	A		Glass	flat					
03GA24-5	A		Glass	other					
03GA24-6	D		Glass	bottle					
03GA24-7	D		Ceramic	ironstone					
03GA24-8	D		Ceramic	ironstone					
03GA24-9	D		Ceramic	ironstone					
03GA24-10	D		Ceramic	ironstone					
03GA25-1	A		Metal	construction					
03GA25-2	A		Metal	other					
03GA25-3	A		Constr. Mat.	asbestos					
03GA25-4	A		Ceramic	other					
03GA25-5	A		Glass	flat					
03GA25-6	A		Glass	other					
03GA25-7	D		Glass	bottle					
03GA26-1	A		Metal	construction					
03GA26-2	D		Metal	domestic	screw cap				w/ red paint
03GA26-3	D		Bone	faunal remains					
03GA26-4	P		Plastic	Personal	LP record		fragment		
03GA26-5	D		Glass	bottle					incl. Partial finish
03GA27-1	A		Metal	other					
03GA27-2	D		Bone	faunal remains					
03GA27-3	A		Glass	flat					
03GA27-4	D		Glass	bottle					
03GA28-1	A		Metal	construction					
03GA28-2	A		Metal	other					



Cat. Number	Group		Artifact Type	Form	Function	Condition	Date Range	Notes
	Assignment	Artifact Class						
03GA28-3	D	Bone	faunal remains					
03GA28-4	D	Ceramic	ironstone					
03GA28-5	A	Glass	flat					
03GA28-6	A	Glass	other					
03GA28-7	D	Glass	bottle					
03GA28-8	D	Glass	bottle					
03GA29-1	A	Metal	construction					
03GA29-2	A	Metal	other					
03GA29-3	D	Bone	faunal remains					
03GA29-4	D	Ceramic	ironstone					
03GA29-5	A	Glass	flat					
03GA29-6	D	Glass	other					
03GA29-7	D	Glass	bottle					decorative
03GA29-8	D	Glass	bottle					
03GA29-9	D	Glass	bottle					prescription/toilet water
03GA30-1	A	Metal	construction					
03GA30-2	A	Metal	other					
03GA30-3	-	Stone	-					
03GA30-4	A	Constr. Mat.	brick					
03GA30-5	D	Bone	faunal remains					
03GA30-6	D	Ceramic	ironstone					
03GA30-7	D	Glass	other					decorative (1), Burned (1)
03GA30-8	D	Glass	bottle					
03GA30-9	A	Glass	flat					
03GA30-10	D	Glass	bottle					cross mend. "Federal Law..."
03GA30-11	D	Glass	bottle					same as above

Cat. Number	Group		Artifact Class	Artifact Type	Form	Function	Condition	Date Range	Notes
	Assignment								
03GA31-1	D		Bone	faunal remains					
03GA31-2	A		Metal	construction					
03GA31-3	A		Metal	other					
03GA31-4	-		Carbon	Carbon Rod					
03GA31-5	D		Ceramic	ironstone					
03GA31-6	P		Plastic	Personal	LP record		Fragment		
03GA31-7	D		Glass	bottle					
03GA31-8	A		Plastic	construction	conduit				PVC
03GA32-1	A		Metal	other					
03GA32-2	A		Metal	construction					
03GA32-3	D		Bone	faunal remains					
03GA32-4	D		Ceramic	ironstone					
03GA32-5	D		Glass	other					
03GA32-6	A		Glass	flat					
03GA32-7	D		Glass	bottle					
03GA32-8	A		Metal	hardware					brass spigot
03GA33-1	D		Glass	bottle					
03GA33-2	A		Glass	flat					
03GA33-3	A		Glass	ironstone					
03GA33-4	D		Ceramic	other					decorative
03GA33-5	A		Constr. Mat.	brick					1 pc. W/ 1 side painted green
03GA33-6	A		Plastic	construction	conduit				PVC
03GA33-7	D		Bone	faunal remains					fish vertebrae
03GA33-8	D		Metal	domestic					can pop top; spoon handle
03GA33-9	A		Metal	construction					
03GA33-10	D		Glass	bottle					finish/ possible prescription bottle

Cat. Number	Group		Artifact Class	Artifact Type	Form	Function	Condition	Date Range	Notes
	Assignment								
03GA34-1	D		Glass	bottle					
03GA34-2	A		Glass	flat					
03GA34-3	P		Glass	other			fragment		Mirror
03GA34-4	P		Plastic	UID					
03GA34-5	P		Plastic	Personal	LP record				fragment
03GA34-6	D		Rubber	Seal	gasket				home canning?
03GA34-7	A		Metal	other					
03GA34-8	A		Metal	construction					
03GA34-9	D		Bone	faunal remains					
03GA34-10	P		Metal	Personal					Child's Toy--Jack
03GA35-1	A		Metal	construction					
03GA35-2	D		Metal	domestic					
03GA35-3	D		Bone	faunal remains					
03GA35-4	A		Constr. Mat.	cement					
03GA35-5	D		Glass	bottle					
03GA35-6	P		Metal	Personal					Child's Toy--Cap Gun Barrel
03GA35-7	D		Glass	bottle				1927-1954	Cross mend Reed glass
03GA35-8	D		Glass	bottle				as above	as above
03GA35-9	D		Glass	bottle				as above	as above
03GA36-1	A		Metal	construction					
03GA36-2	A		Constr. Mat.	cement					
03GA36-3	A		Metal	other					
03GA36-4	A		Rubber	Hard Rubber					
03GA36-5	D		Ceramic	Porcelain					
03GA36-6	A		Glass	flat					
03GA36-7	D		Glass	bottle					
03GA37-1	A		Metal	construction					
03GA37-2	A		Constr. Mat.	cement					

Cat. Number	Group		Artifact Class	Artifact Type	Form	Function	Condition	Date Range	Notes
	Assignment								
03GA37-3	D		Ceramic	Porcelain					
03GA37-4	D		Plastic	cellophane					
03GA37-5	A		Glass	flat					
03GA37-6	D		Glass	bottle					
03GA37-7	D		Glass	bottle					
03GA38-1	A		Metal	other					
03GA38-2	-		Carbon	Carbon Rod					
03GA38-3	D		Bone	faunal remains					
03GA38-4	D		Glass	bottle					
03GA38-5	D		Glass	other					
03GA38-6	D		Metal	domestic	spoon	tableware	Silver plate peeling		Kensington Silver Plate
03GA38-7	A		Metal	construction					
03GA39-1	A		Metal	other					
03GA39-2	A		Metal	construction					
03GA39-3	A		Metal	hardware					
03GA39-4	D		Metal	domestic					
03GA39-5	P		Plastic	UID					
03GA39-6	A		Constr. Mat.	wood/tar					
03GA39-7	D		Ceramic	ironstone					
03GA39-8	D		Glass	other					
03GA39-9	A		Glass	flat					
03GA39-10	D		Glass	bottle					
03GA39-11	D		Bone	faunal remains					
03GA39-12	D		Glass	other	decorative bowl?	decoration	large sherd		carnival glass?
03GA40-1	D		Glass	bottle					
03GA40-2	P		Textile	Cothing	shoelace		segment		

Cat. Number	Group		Artifact Class	Artifact Type	Form	Function	Condition	Date Range	Notes
	Assignment								
03GA41-1	A		Metal	construction					
03GA41-2	A		Metal	other					
03GA41-3	A		Constr. Mat.	asbestos					
03GA41-4	D		Glass	other					
03GA41-5	A		Glass	flat					
03GA41-6	D		Glass	bottle					
03GA42-1	D		Glass	bottle					
03GA42-2	A		Glass	flat					
03GA42-3	P		Plastic	Personal	LP record		fragment		
03GA42-4	A		Constr. Mat.	asbestos					
03GA43-1	A		Metal	construction					
03GA43-2	D		Metal	other					
03GA43-3	P		Metal	Personal					.22 shell casing
03GA43-4	A		Plastic	UID					
03GA43-5	A		Glass	flat					
03GA43-6	D		Glass	bottle					
03GA44-1	A		Metal	other					
03GA44-2	A		Metal	hardware					
03GA44-3	A		Metal	construction					
03GA44-4	D		Metal	domestic					
03GA44-5	A		Constr. Mat.	terracotta pipe					
03GA44-6	D		Glass	bottle					
03GA44-7	A		Glass	flat					
03GA44-8	P		Metal	Personal	brass stud				clothing fastener
03GA44-9	D		Bone	faunal remains					
03GA44-10	D		Ceramic	ironstone					
03GA45--1	D		Glass	bottle					
03GA45--2	D		Ceramic	ironstone					

Cat. Number	Group		Artifact Class	Artifact Type	Form	Function	Condition	Date Range	Notes
	Assignment								
03GA45--3	A		Metal	construction					
03GA46-1	A		Metal	construction					
03GA46-2	A		Metal	other					
03GA46-3	D		Bone	faunal remains					
03GA46-4	A		Glass	flat					
03GA46-5	D		Glass	bottle					
03GA47-1	A		Metal	construction					
03GA47-2	A		Metal	other					
03GA47-3	A		Constr. Mat.	brick					
03GA47-4	D		Glass	other					
03GA47-5	D		Glass	bottle					
03GA48-1	A		Metal	construction	nail frag.				
03GA48-2	T		Metal	spark plug					
03GA48-3	D		Bone	faunal remains					
03GA48-4	A		Glass	flat					
03GA48-5	D		Glass	bottle					
03GA49-1	A		Metal	other					
03GA49-2	A		Metal	construction					
03GA49-3	D		Metal	domestic					
03GA49-4	A		Constr. Mat.	wood/brick					
03GA49-5	D		Ceramic	ironstone					
03GA49-6	A		Glass	flat					
03GA49-7	D		Glass	bottle					
03GA49-8	A		Glass	other					
03GA49-9	D		Bone	faunal remains					
03GA50-1	D		Metal	domestic					
03GA50-2	A		Metal	other					

Cat. Number	Group Assignment	Artifact Class	Artifact Type	Form	Function	Condition	Date Range	Notes
03GA50-3	A	Metal	construction					
03GA50-4	D	Bone	faunal remains					
03GA50-5	A	Wood	fragmet					possibly ebony?
03GA50-6	D	Ceramic	Porcelain					decorated
03GA50-7	D	Ceramic	ironstone					
03GA50-8	P	Metal	Personal					Child's Toy--finger ring
03GA50-9	A	Rubber	Hard Rubber	bell shaped	light socket	intact		
03GA50-10	A	Glass	flat					
03GA50-11	D	Glass	bottle					
03GA50-12	A	Constr. Mat.	asbestos					
03GA50-13	D	Glass	other					
03GA50-14	D	Bone	faunal remains					charred
03GA51-1	A	Metal	construction					
03GA51-2	A	Metal	other					
03GA51-3	D	Glass	bottle					
03GA51-4	A	Glass	flat					very thick
03GA51-5	D	Ceramic	Porcelain					
03GA51-6	A	Glass	other					
03GA51-7	D	Bone	faunal remains					
03GA52-1	A	Metal	construction					
03GA52-2	A	Metal	other					
03GA52-3	D	Ceramic	ironstone					
03GA52-4	D	Glass	other					
03GA52-5	A	Glass	flat					
03GA52-6	D	Glass	bottle					incl. Amethyst
03GA52-7	P	Button	Personal	two hole button	clothing fastener			very fragile; shell

Cat. Number	Group		Artifact Class	Artifact Type	Form	Function	Condition	Date Range	Notes
	Assignment								
03GA52-8	D		Glass	bottle	square body		base partial		"1" on base
03GA53-1	A		Metal	other					
03GA53-2	A		Metal	construction					
03GA53-3	D		Glass	bottle			partial finishes (3)		Incl. Amethyst, threaded
03GA53-4	D		Glass	other					cut; decorative
03GA53-5	A		Glass	flat					
03GA53-6	D		Bone	faunal remains					
03GA53-7	D		Ceramic	ironstone					
03GA53-8	A		Constr. Mat.	brick					
03GA54-1	D		Glass	bottle					
03GA54-2	D		Glass	other					
03GA54-3	D		Ceramic	Porcelain					
03GA54-4	D		Metal	other					
03GA54-5	A		Plastic	hard plastic					
03GA54-6	D		Bone	faunal remains					
03GA54-7	D		Ceramic	ironstone					
03GA55-1	D		Glass	bottle					
03GA55-2	A		Metal	construction					
03GA55-3	A		Constr. Mat.	roofing shingle					
03GA55-4	A		Metal	hardware					
03GA56-1	D		Glass	bottle					
03GA56-2	D		Glass	other					
03GA56-3	A		Metal	construction					
03GA56-4	A		Metal	hardware	threaded nut	pipe coupling	partial		
03GA56-5	A		Metal	other					



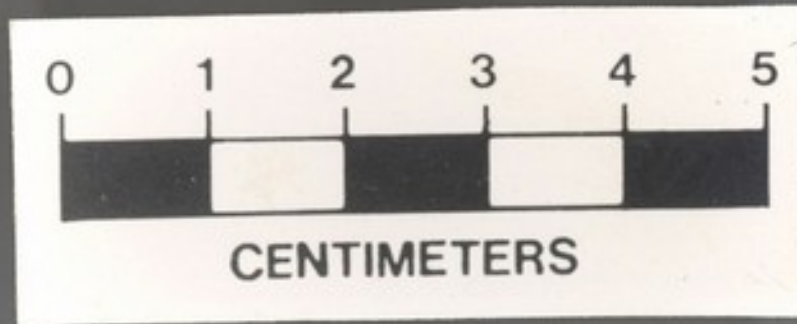
Cat. Number	Group		Artifact Class	Artifact Type	Form	Function	Condition	Date Range	Notes
	Assignment								
03GA56-6	D		Bone	faunal remains					
03GA56-7	D		Plastic	thin plastic		bottlecap liner	dried glue 1 side		
03GA56-8	P		Metal	Personal					
03GA56-9	-		Carbon	Carbon Rod					
03GA56-10	D		Glass	other					
03GA57-1	A		Metal	construction					
03GA57-2	A		Metal	other					
03GA57-3	A		Constr. Mat.	tile					cut glass
03GA57-4	D		Glass	other					
03GA57-5	D		Glass	bottle					
03GA58-1	A		Metal	other					
03GA58-2	A		Metal	construction					
03GA58-3	D		Metal	domestic					
03GA58-4	A		Constr. Mat.	brick					
03GA58-5	D		Ceramic	ironstone					
03GA58-6	D		Glass	bottle					
03GA58-7	D		Glass	other					
03GA58-8	A		Glass	flat					
03GA58-9	D		Bone	faunal remains					
03GA59-1	A		Metal	construction					
03GA59-2	A		Metal	other					
03GA59-3	D		Metal	domestic					
03GA59-4	A		Metal	hardware					metal grommets
03GA59-5	C&I		Metal	coin					1981 Lincoln Penny
03GA59-6	D		Bone	faunal remains					
03GA59-7	D		Ceramic	ironstone					

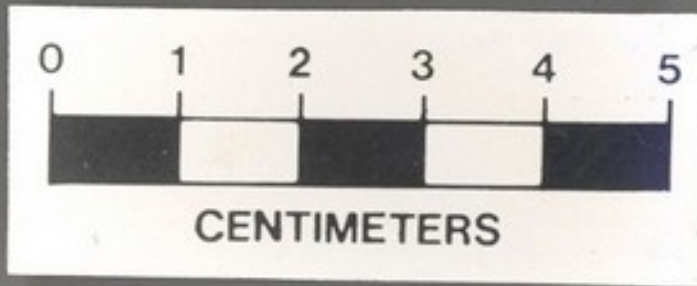
Cat. Number	Group		Artifact Type	Form	Function	Condition	Date Range	Notes
	Assignment	Artifact Class						
03GA59-8	D	Glass	other					
03GA59-9	A	Glass	flat					
03GA59-10	D	Glass	bottle					short necked liquor
03GA59-11	D	Glass	bottle					irregular cork "seat"
03GA59-12	D	Glass	bottle					on interior of lip
03GA59-13	D	Glass	bottle					slight amethyst color
03GA59-14	D	Ceramic	other					
03GA60-1	A	Metal	construction					
03GA60-2	A	Metal	other					
03GA60-3	A	Constr. Mat.	cement					
03GA60-4	D	Bone	faunal remains					
03GA60-5	A	Glass	flat					
03GA60-6	D	Glass	bottle					incl. Amethyst
03GA62-1	A	Metal	construction					
03GA62-2	D	Metal	domestic					
03GA62-3	A	Metal	other					
03GA62-4	A	Metal	hardware					
03GA62-5	D	Bone	faunal remains					charred
03GA62-6	D	Glass	other					cut glass "cross hatching"
03GA62-7	A	Glass	flat					
03GA62-8	D	Glass	bottle					
03GA63-1	A	Metal	construction					
03GA63-2	A	Metal	other					
03GA63-3	A	Constr. Mat.	cement					1 pc. W/ attached nail frag.
03GA63-4	D	Bone	faunal remains					
03GA63-5	D	Ceramic	ironstone					blue transfer print
03GA63-6	D	Glass	other					

Cat. Number	Group		Artifact Type	Form	Function	Condition	Date Range	Notes
	Assignment	Artifact Class						
03GA63-7	A	Glass	flat					
03GA63-8	D	Glass	bottle					
03GA63-9	D	Glass	bottle					
03GA63-10	D	Glass	bottle					embossed "federal..."
03GA64-1	D	Metal	domestic					can frag. Partial cross mend
03GA64-2	A	Metal	construction					
03GA64-3	A	Metal	other					
03GA64-4	A	Constr. Mat.	cement					
03GA64-5	D	Ceramic	ironstone					
03GA64-6	D	Bone	faunal remains					
03GA64-7	D	Glass	other					
03GA64-8	A	Glass	flat					
03GA64-9	D	Glass	bottle					
03GA64-10	D	Glass	bottle	elongated oval base				brown glass "D18 56-43"
03GA65-1	D	Glass	bottle					
03GA65-2	D	Glass	bottle					Amethyst glass only
03GA65-3	A	Metal	construction					
03GA65-4	A	Metal	other					
03GA65-5	A	Glass	flat					
03GA66-1	A	Metal	construction					
03GA66-2	A	Metal	other					
03GA66-3	D	Bone	faunal remains					
03GA66-4	D	Glass	other	base	cold cream?			white glass
03GA66-5	D	Ceramic	ironstone					blue floral print
03GA66-6	A	Glass	flat					
03GA66-7	D	Glass	bottle					
03GA66-8	D	Glass	bottle					embossing "3"

<b>Group</b>								
<b>Cat. Number</b>	<b>Assignment</b>	<b>Artifact Class</b>	<b>Artifact Type</b>	<b>Form</b>	<b>Function</b>	<b>Condition</b>	<b>Date Range</b>	<b>Notes</b>
03GA66-9	A	Metal	construction	pipe	hot water pipe?			
03GA67-1	D	Glass	bottle					
03GA67-1	A	Constr. Mat.	asbestos					
03GA67-1	A	Glass	other					1 pc. Burned glass
03GA67-1	D	Ceramic	ironstone					
03GA68-1	D	Glass	bottle					
03GA68-2	A	Metal	construction					

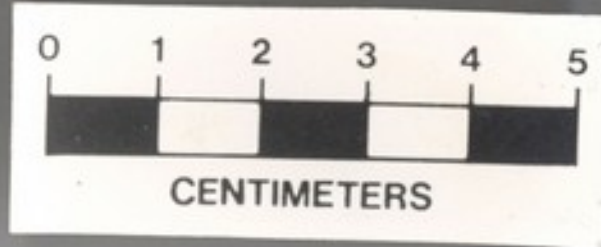








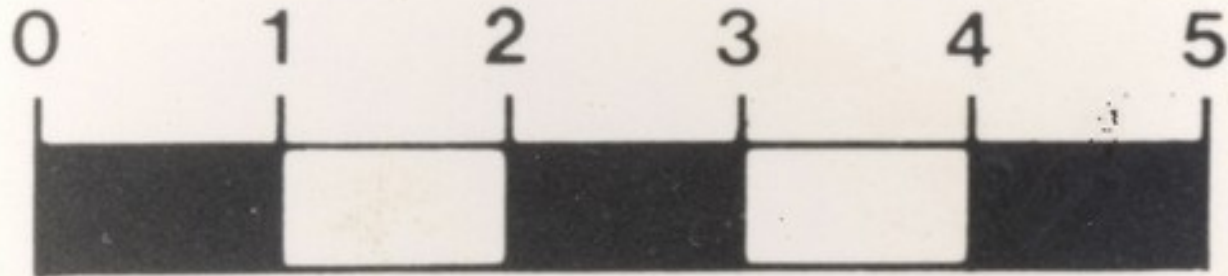
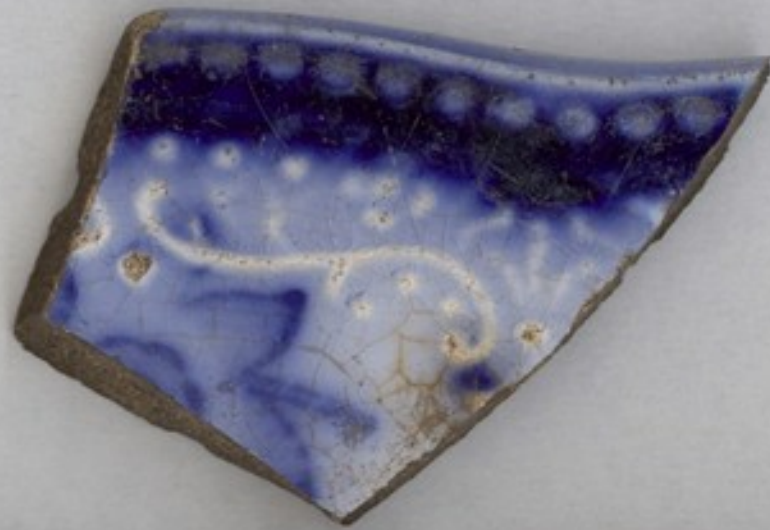








0 1 2 3 4 5  
CENTIMETERS



CENTIMETERS